

# Brass Quintet

by Jeffrey Harrington

Allegro maestoso e ritmico

$\text{♩} = 90$

5

Tuba

*f*

8

11

14

18

*piu f*

22

*meno f*

26

29

33

Tba. 

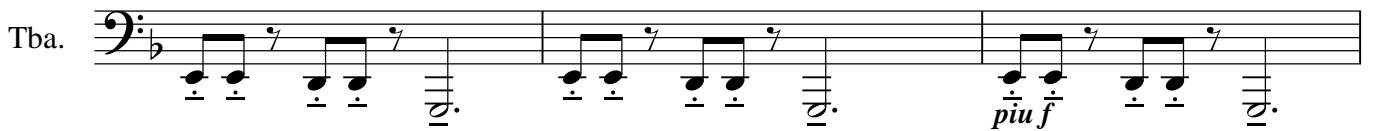
36

Tba. 

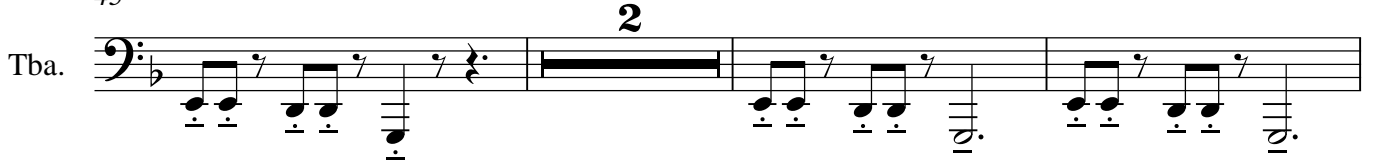
39

Tba. 

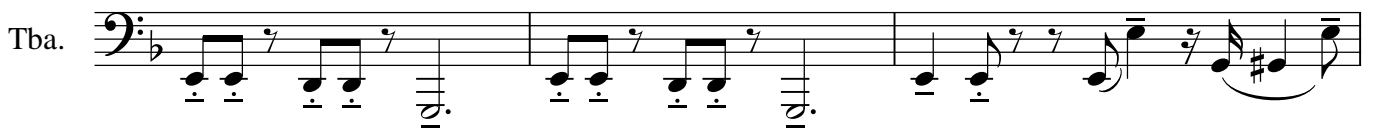
42

Tba. 

45


Tba. 

50

Tba. 

53

rit. . . . . ♩.=90 (a tempo)

Tba. 

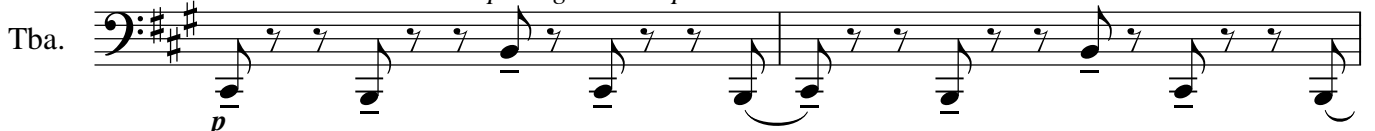
56

rit. . . . .

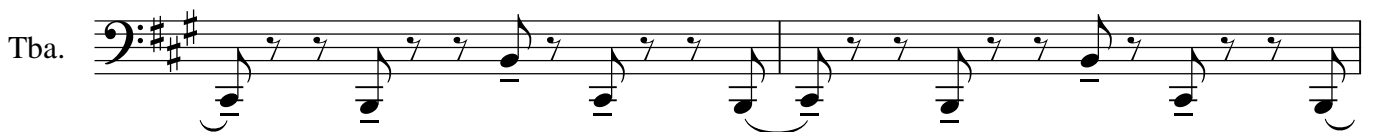
Tba. 

59

♩.=90 (a tempo) poco giocoso e pesante

Tba. 

61

Tba. 

63

Tba.

65

*poco accel.*

Tba.

67

♩ = 95

Tba.

69

Tba.

71

Tba.

73

Tba.

75

Tba.

77

Tba.

79

Tba.

Musical notation for Tuba, measures 79-81. The key signature is two sharps (F# and C#). The music consists of eighth notes and quarter notes with stems pointing up, alternating between two bass notes.

82

Tba.

Musical notation for Tuba, measures 82-84. The key signature is two sharps (F# and C#). The music consists of eighth notes and quarter notes with stems pointing up, alternating between two bass notes.

85

Tba.

Musical notation for Tuba, measures 85-86. The key signature is two sharps (F# and C#). The music consists of eighth notes and quarter notes with stems pointing up, alternating between two bass notes.

87

Tba.

Musical notation for Tuba, measures 87-88. The key signature changes from two sharps to two flats (Bb and Eb). The music consists of eighth notes and quarter notes with stems pointing up, alternating between two bass notes. A dynamic marking *p* is present at the start of measure 88.

89

Tba.

Musical notation for Tuba, measures 89-90. The key signature is two flats (Bb and Eb). The music consists of eighth notes and quarter notes with stems pointing up, alternating between two bass notes.

91

Tba.

Musical notation for Tuba, measures 91-92. The key signature is two flats (Bb and Eb). The music consists of eighth notes and quarter notes with stems pointing up, alternating between two bass notes.

93

Tba.

Musical notation for Tuba, measures 93-94. The key signature is two flats (Bb and Eb). The music consists of eighth notes and quarter notes with stems pointing up, alternating between two bass notes.

95

Tba.

Musical notation for Tuba, measures 95-96. The key signature is two flats (Bb and Eb). The music consists of eighth notes and quarter notes with stems pointing up, alternating between two bass notes. A dynamic marking *pp* is present at the start of measure 95.

97

Tba.

Musical notation for Tuba, measures 97-98. The key signature is two flats (Bb and Eb). The music consists of eighth notes with stems pointing up, alternating between two bass notes. A double bar line is present at the end of measure 98.

99

Tba.

Musical notation for Tuba, measures 99-100. The key signature is two flats (Bb and Eb). The music consists of eighth notes with stems pointing up, alternating between two bass notes. A dynamic marking *f* is present at the start of measure 99. A double bar line is present at the end of measure 100.

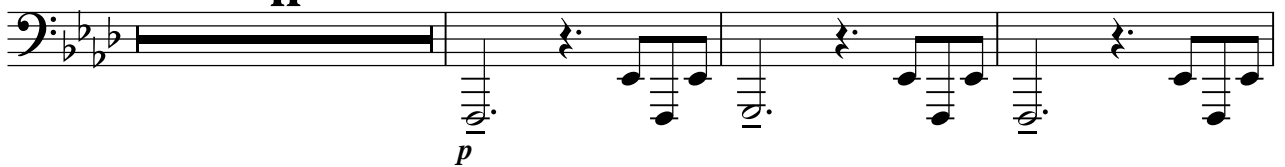
101

Tba. 

103

Tba. 

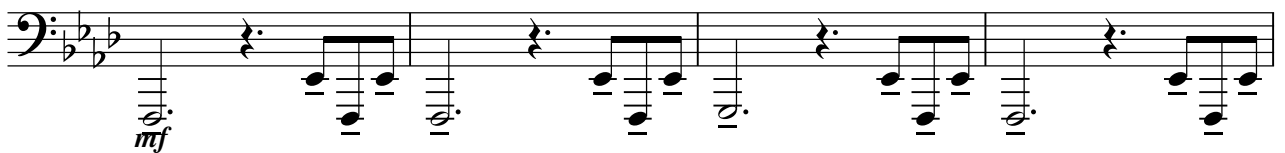
105 **Meno mosso**  
♩ = 85**11**

Tba. 

119

Tba. 

122

Tba. 

126

**poco accel.**

Tba. 

129

♩ = 90

Tba. 

131

Tba. 

134



138



142



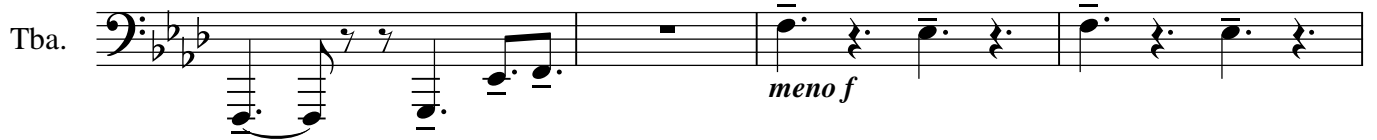
145



148



151



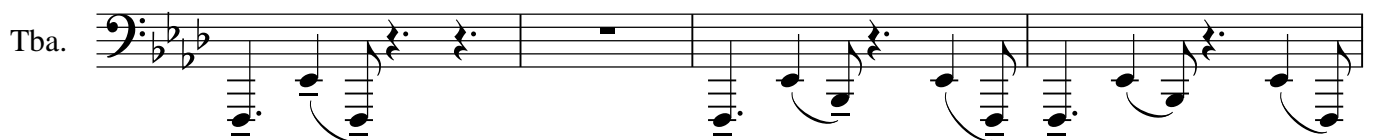
155



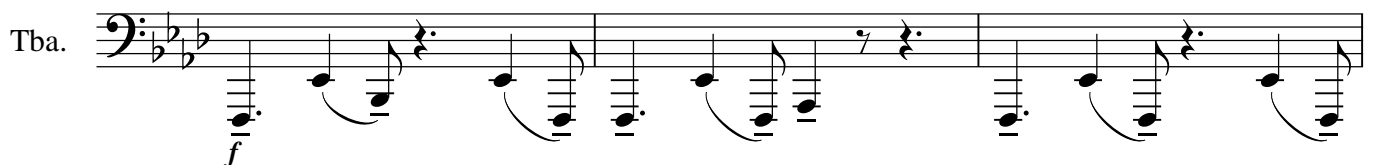
159



163



167



170

Tba. *meno f*

173

Tba.

176

Tba. **2**

181

Tba.

184

Tba. *rit.* . . . . .

186 ♩=90 (a tempo)

Tba. *mf*

189

Tba. *rit.* . . . . .

191 ♩=90 (a tempo) *poco giocoso e pesante*

Tba. *p*

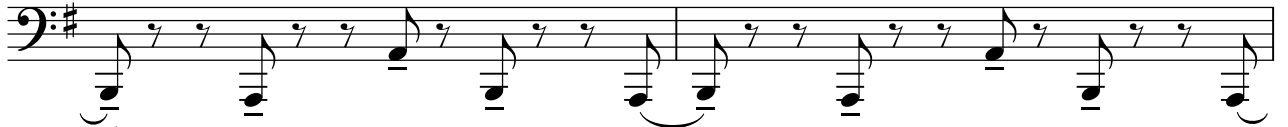
193

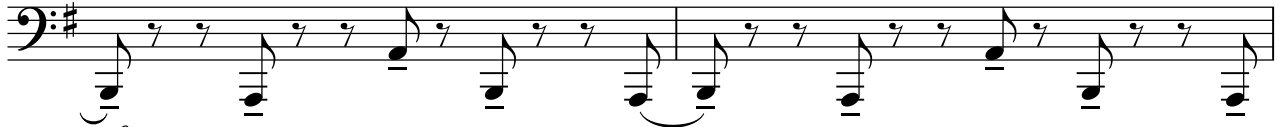
Tba.

195

Tba.

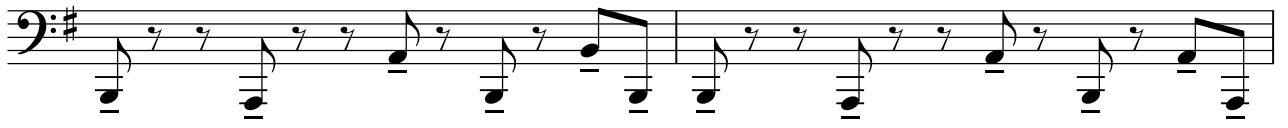
197 *poco accel.*

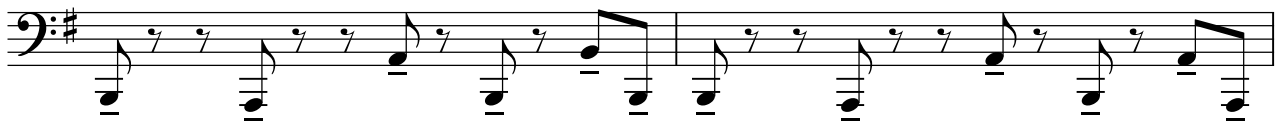
Tba.  *cresc.*  
199  $\text{♩} = 95$

Tba.  *mf*  
201

Tba.    
203


Tba.    
205


Tba.    
207

Tba.    
209

Tba.    
212

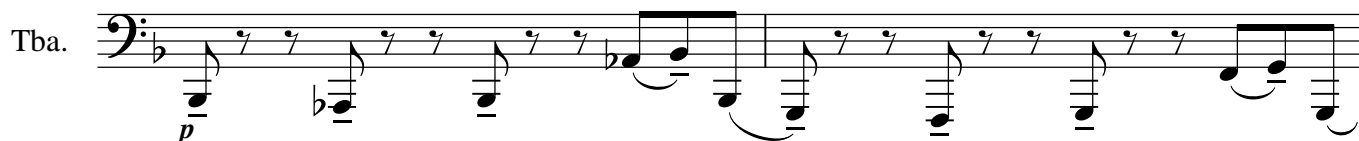
Tba.    
215

Tba.    
218

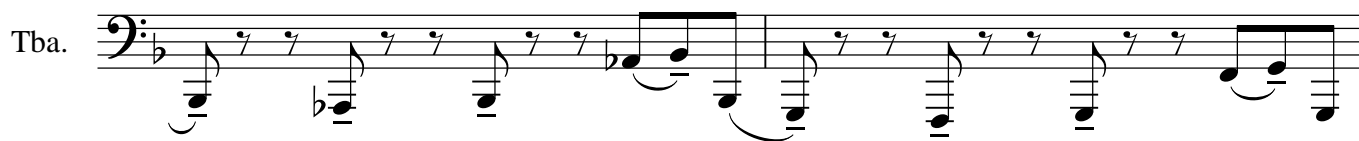
Tba.    
218




220

Tba. 

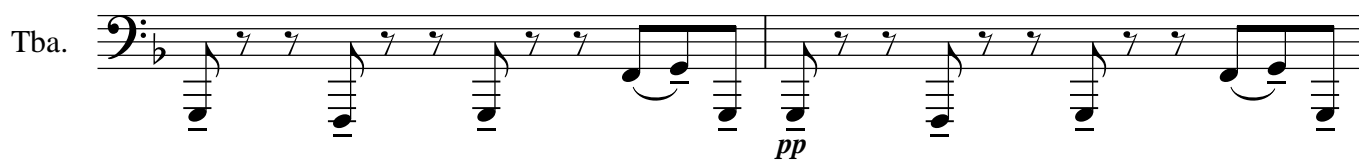
222 *poco rit.* . . . . . ♩=90

Tba. 

224

Tba. 

226

Tba. 

228

Tba. 

230

Tba. 

232

Tba. 

234

Tba. 